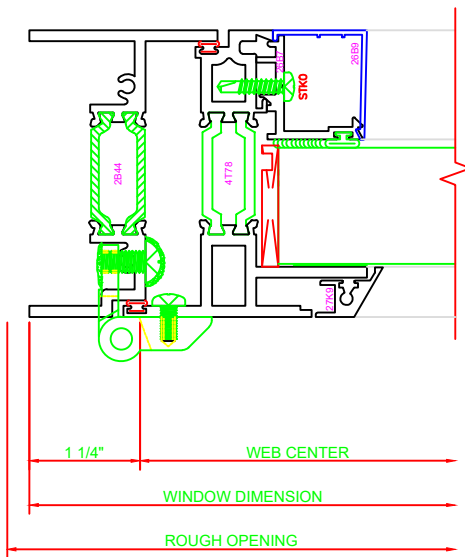
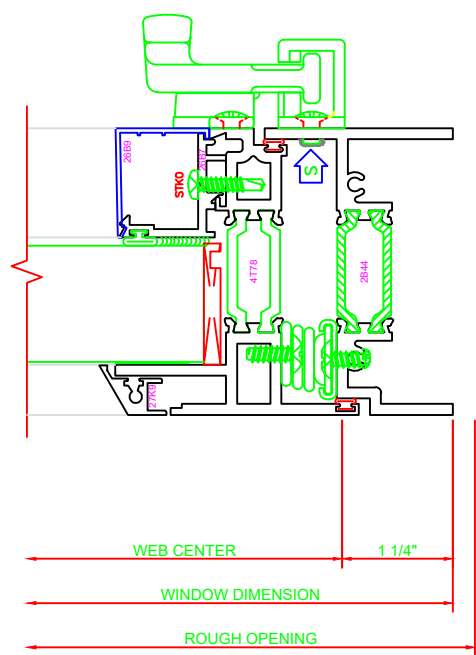


13 = **ERECTOR NOTE:**
 THE HINGED JAMB FRAME SHALL BE
 INSTALLED PLUMB. ALL HINGES SHALL
 BE SECURELY BLOCKED AND
 ANCHORED TO THE CONDITION
 THROUGH THE HINGES OR AS CLOSE
 AS POSSIBLE TO THE HINGES.



442 JAMB
 SERIES: 321G
 CASEMENT OUT
 BUTT HINGES



441 JAMB
 SERIES: 321G
 CASEMENT OUT
 CAM LOCK

141 HEAD
 SERIES: 321G
 CASEMENT OUT
 BUTT HINGES

241 SILL
 SERIES: 321G
 CASEMENT OUT
 BUTT HINGES

